

# FROM SPATIAL DATA TO OPERATIONAL CLARITY

From **3D mapping** and **GeoAI** to **Digital Twins** and **Field Automation**, Cyient delivers **Esri-powered solutions** that move industries from static maps to dynamic decisions



## WHEN LOCATION IS EVERYWHERE, WHY ISN'T INSIGHT?

From **satellite imagery** and **LiDAR** to **IoT feeds** and **Indoor maps**, organizations are generating more spatial data than ever. But without context, data alone can't drive decisions.

At Cyient, we transform that **complexity into real-time, decision-ready intelligence**. Our offerings, **AI-led mapping, intelligent image processing, data analytics, and enterprise GIS integration**, equip enterprises and governments to govern, operate, and respond with precision.

Powered by **Edge AI, GeoAI, and Agentic Platforms**, our geospatial solutions bring insights closer to where decisions are made—enabling faster action, sharper clarity, and greater resilience across Government, Utilities, Commercials, Infrastructure, and beyond.

## CYIENT: YOUR PARTNER FOR LOCATION-DRIVEN INNOVATION



Trusted by **300+** global customers, including 40% of the top 100 global innovators



**98%** revenue retention from repeat business



CMMI-DEV Level 5-certified and **Esri Gold Partner** for **25+ years**



**35+** Centers of Excellence, powered by **500+** spatial experts



Accelerators like **SmartHub, UNBridge,** and **Sketch2GIS**



Strategic partnerships with **Esri, Autodesk, Bentley, AWS, Salesforce, ServiceNow,** and more

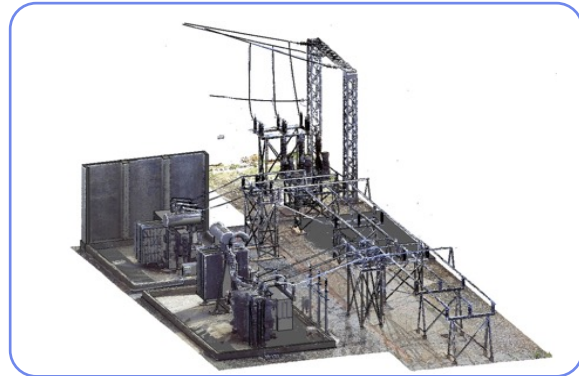


## OUR SPATIAL INTELLIGENCE STACK

At Cyient, we don't stop at maps—we build the intelligence behind them. Our spatial solutions cover the full spectrum, from data capture to decision support, enabling scalable transformation across sectors.

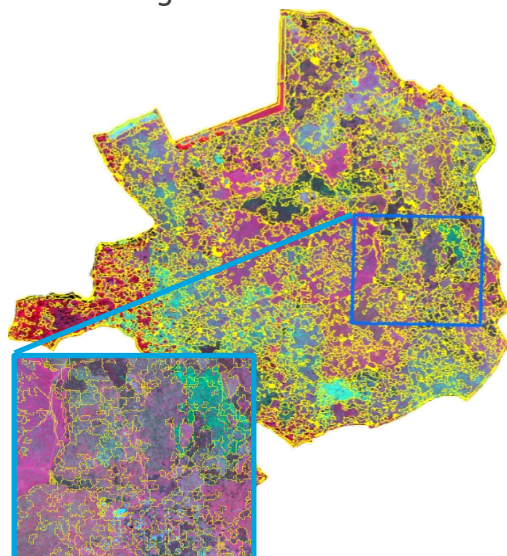
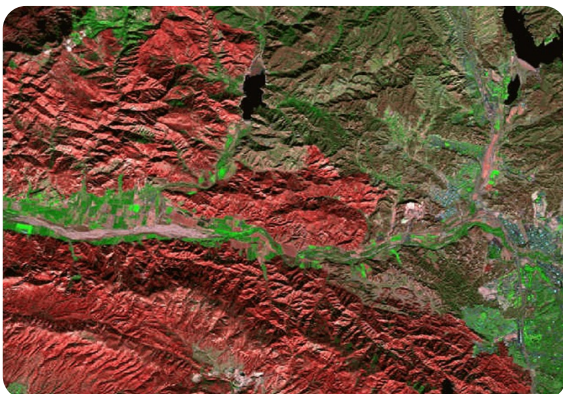
### Digital Twins & Indoors

- Indoor Mapping, Asset & Space Management
- CAD/BIM to GIS Conversion
- Routing, Security, Emergency Response
- 3D City Modeling, Mesh Texturing
- HD Mapping, Infrastructure Modeling
- IoT, AR/VR Integration for Immersive Twins



### Image Processing & Remote Sensing

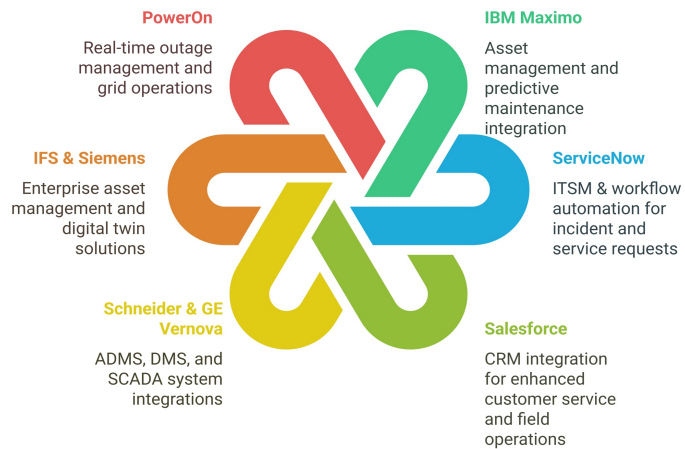
- Aerial/Satellite Image Analysis
- Feature Extraction & Object Detection
- LiDAR Classification, DEM/DTM Modeling
- Change Detection, LU/LC Mapping
- Drone Data Integration, Processing and Modeling



## Enterprise GIS & Integration Services

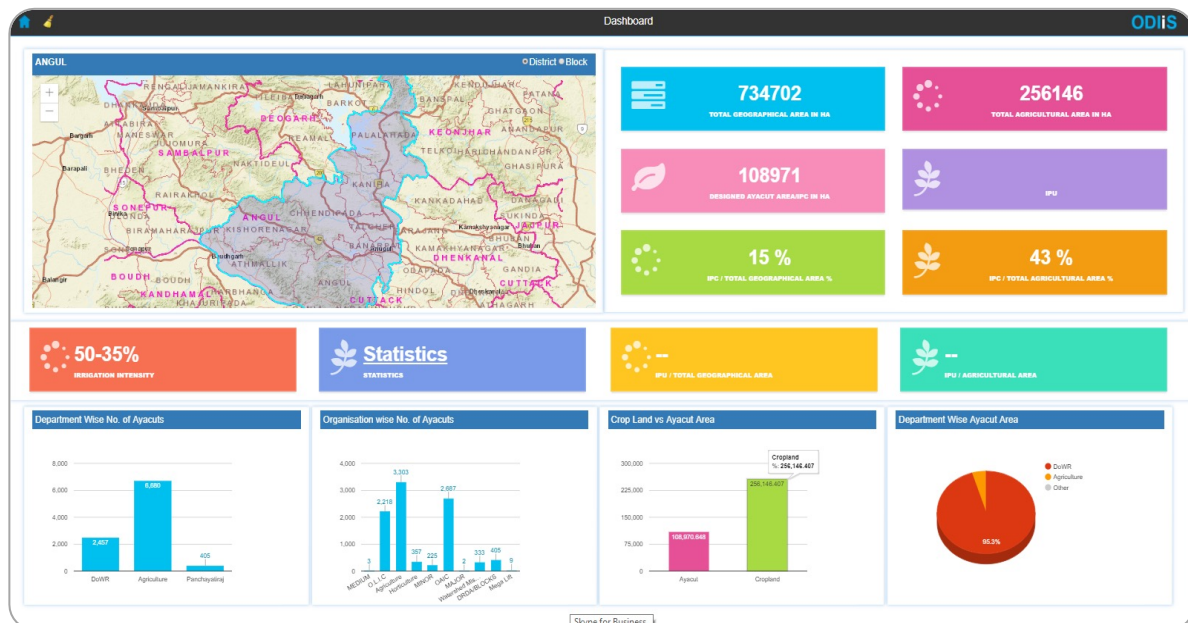
- Application Development (Web, Mobile, Desktop)
- Portal & Dashboard Configuration
- Cloud Migration & DevOps Support (AWS, Azure, GCP)
- Integration with SAP, ServiceNow, Salesforce, OSIsoft PI, Maximo, BI Tools
- Managed Services & System Upgrades

### Cyient's Enterprise Application Integrations



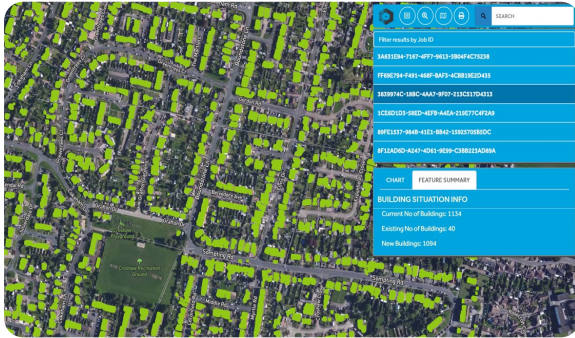
## Intelligent Data Management

- Address & Asset Data Creation
- Data Enrichment & Curation
- UN Model-Based Migration
- Data Quality Audits & Publishing
- RPA/Automation in Data Pipelines





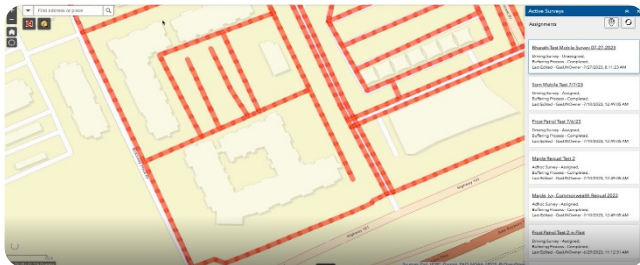
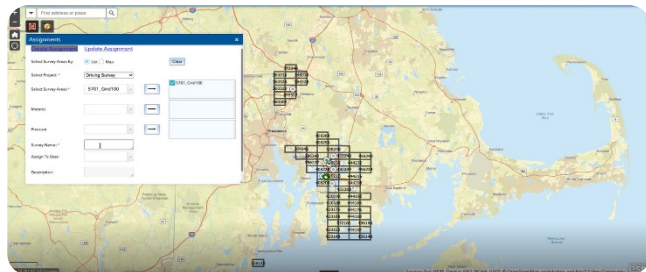
## GeoAI & Spatial Analytics



- Automated Feature Extraction using ML
- Model Training & Predictive Analytics
- Spatial Insights for Flood, Wildfire, Crop, and Vegetation Monitoring
- Location-Based Services & Custom Dashboards

## Utilities & Asset Lifecycle Services

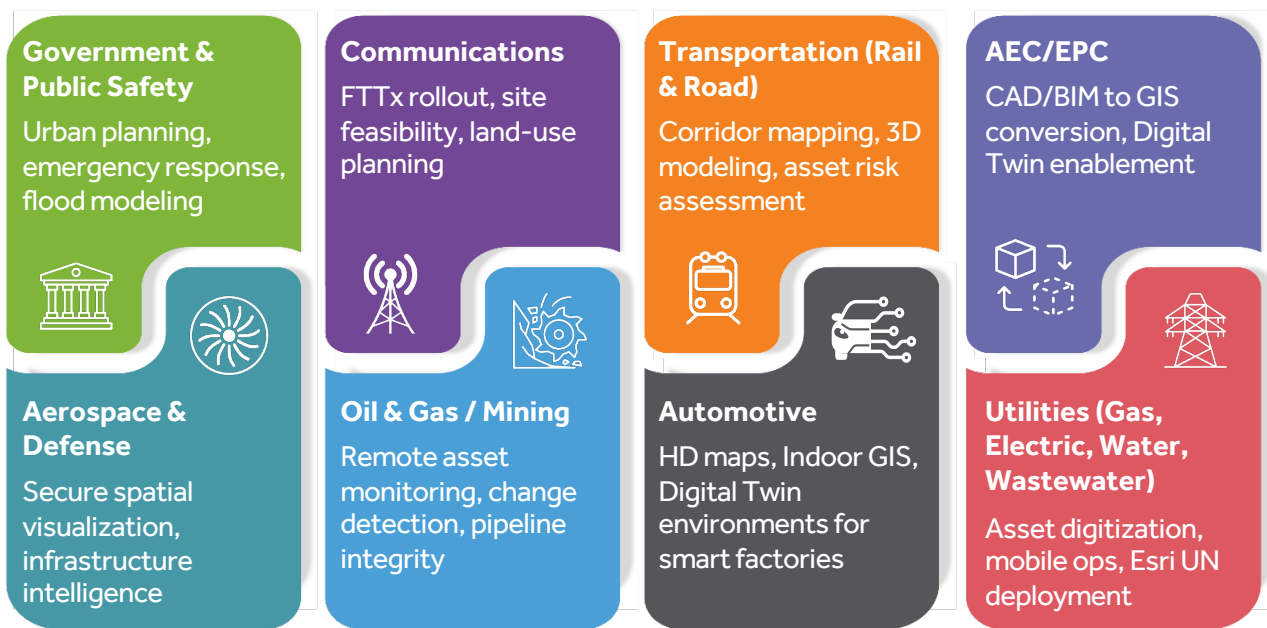
- Utility Network (UN) Migration & Deployment
- Leak Detection, Compliance Tracking, Field Apps
- Crew Monitoring & 811 Ticket Management



- Regulatory Reporting & Operational Dashboards
- Design & Engineering Workflow Integration
- Asset Data Management & Predictive Analytics

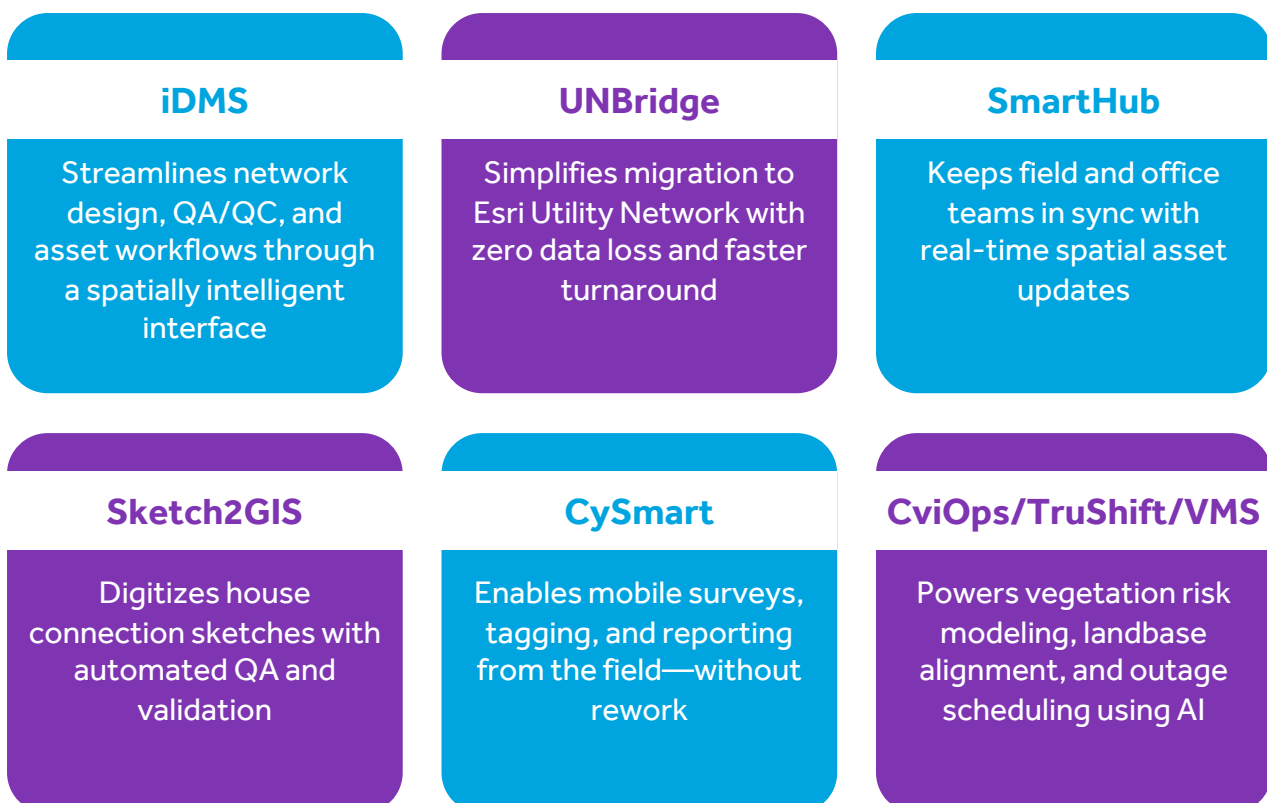


## WHERE WE LEAD AND HOW WE DELIVER

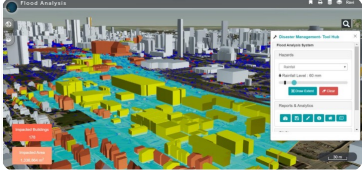
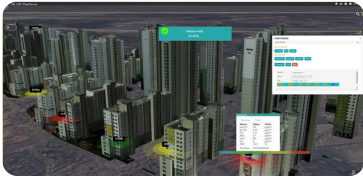

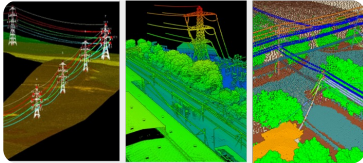



## ACCELERATORS THAT TURN INSIGHT INTO IMPACT

Our AI-powered accelerators help you hit the ground running—reducing deployment risks and driving enterprise-grade outcomes from Day One. Built on our deep expertise across the Esri stack, we bring together ArcGIS Enterprise, Utility Network, 3D visualization, Indoor mapping, and real-time analytics to fast-track your transformation:








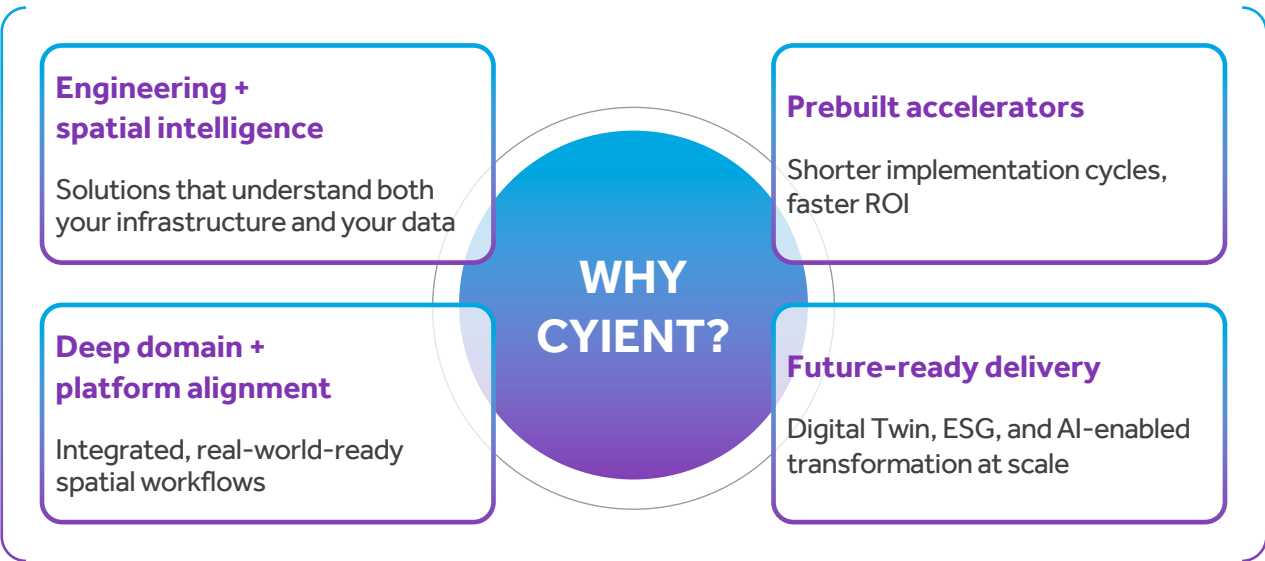
## GLOBAL STORIES OF IMPACT: REAL OUTCOMES, ACROSS REGIONS, TECHNOLOGIES, AND USE CASES.

Customer	Challenge & Solution	Impact Delivered
<b>Federal Emergency Response Agency, North America</b> 	<p>Built a 3D flood and inundation model integrated with IoT sensor hubs to enable real-time emergency planning. Deployed a common operational dashboard for faster coordination.</p>	<ul style="list-style-type: none"> <li>• Real-time situational awareness</li> <li>• Faster disaster response</li> </ul>
<b>Smart City Authority – South Korea</b> 	<p>Developed a 3D Geo-Portal integrating indoor/outdoor GML data with IoT sensors for occupancy, air quality, and urban analytics.</p>	<ul style="list-style-type: none"> <li>• Unified smart city visibility</li> <li>• Sensor-informed infrastructure planning</li> </ul>
<b>Telecom &amp; Industrial Planning – Global</b> 	<p>Implemented GIS-based feasibility tools, Ayacut mapping, and land-use dashboards to support telecom site and industrial zone planning.</p>	<ul style="list-style-type: none"> <li>• Real-time land and irrigation asset tracking</li> <li>• Accelerated planning workflows</li> </ul>
<b>Electric Transmission Operator – USA</b> 	<p>Applied LiDAR and 3D catenary modeling for vegetation risk and wildfire mitigation. Included clearance analysis and tower spotting tools.</p>	<ul style="list-style-type: none"> <li>• \$13.5M annual cost savings</li> <li>• Significant wildfire risk reduction</li> </ul>
<b>Water Utility – EMEA</b> 	<p>Migrated to ArcGIS Utility Network with 30+ system integrations. Enabled unified asset visibility and improved incident resolution.</p>	<ul style="list-style-type: none"> <li>• Single source of truth</li> <li>• Faster field response</li> </ul>



# STRATEGIC TECHNOLOGY ECOSYSTEM

 Cloud & DevOps	 Enterprise Platforms	 Engineering & CAD	 Databases	 AI/ML & Automation
<b>AWS, Microsoft Azure, Google Cloud Platform</b>  Cloud-native GIS, secure deployments, and DevOps-driven automation	<b>ServiceNow, Salesforce, SAP, IBM Maximo, Snowflake</b>  Enabling end-to-end field service management, asset operations, and enterprise workflows	<b>Autodesk, Bentley, Hexagon</b>  CAD-to-GIS integration, Digital Twin enablement, and infrastructure modeling	<b>Oracle, SQL Server, PostgreSQL</b>  Scalable spatial data management and performance -tuned enterprise integration	<b>Python, Apache Spark, RPA, Kubernetes</b>  AI-powered spatial analytics, automation pipelines, and containerized deployments



## LET'S DESIGN TOMORROW—SPATIALLY ENABLED

Whether you're managing a network, launching a rollout, or responding to real-time risk, **spatial intelligence can be the multiplier for everything you do.** Cyient helps you bring that intelligence to life—at scale, with speed, and without silos.


✉ [connect@cyient.com](mailto:connect@cyient.com)

© 2025 Cyient. Cyient believes the information in this publication is accurate as of its publication date; such information is subject to change without notice. Cyient acknowledges the proprietary rights of the trademarks and product names of other companies mentioned in this document.



**Souvik Bhattacharya**  
Sr. Director –  
Geospatial Services & Strategic Partnerships  
M: +1 678-429-8264  
E: [Souvik.Bhattacharya@cyient.com](mailto:Souvik.Bhattacharya@cyient.com)  
 [linkedin.com/in/souvik3](https://www.linkedin.com/in/souvik3)



**Sanjiv Dhupkar**  
Sr. Director –  
GIS Enterprise Applications  
M: +91 9818159088  
E: [Sanjivmadhukar.Dhupkar@cyient.com](mailto:Sanjivmadhukar.Dhupkar@cyient.com)  
 [linkedin.com/in/sanjiv-dhupkar](https://www.linkedin.com/in/sanjiv-dhupkar)